



GNAT CREEK and UPPER GNAT CREEK TRAILS

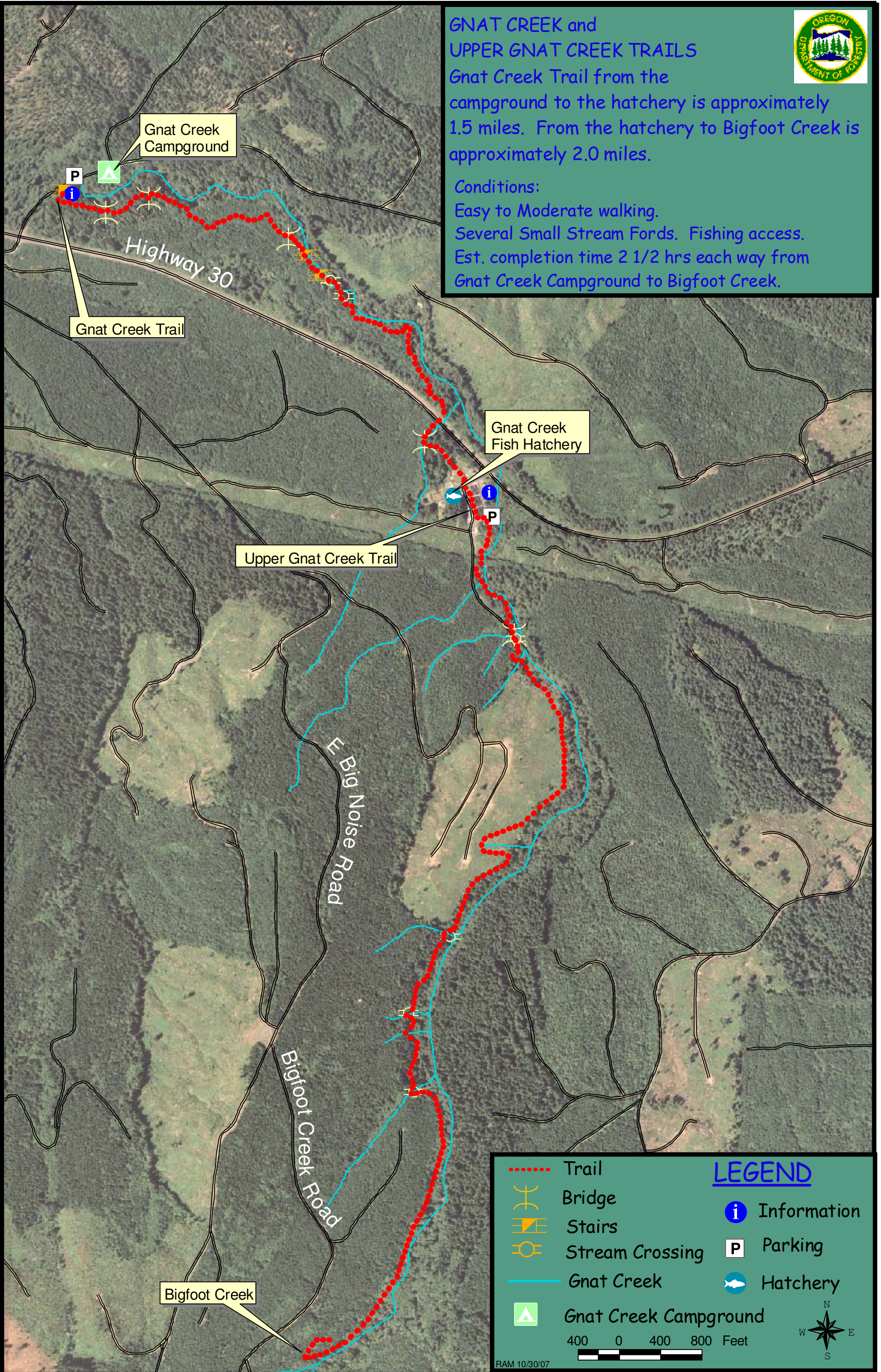
Gnat Creek Trail from the campground to the hatchery is approximately 1.5 miles. From the hatchery to Bigfoot Creek is approximately 2.0 miles.

Conditions:

Easy to Moderate walking.

Several Small Stream Fords. Fishing access.

Est. completion time 2 1/2 hrs each way from Gnat Creek Campground to Bigfoot Creek.



LEGEND

- Trail
- ⌢ Bridge
- ▬ Stairs
- ⊙ Stream Crossing
- Gnat Creek
- ▲ Gnat Creek Campground
- ⓘ Information
- P Parking
- 🐟 Hatchery

400 0 400 800 Feet

RAM 10/30/07