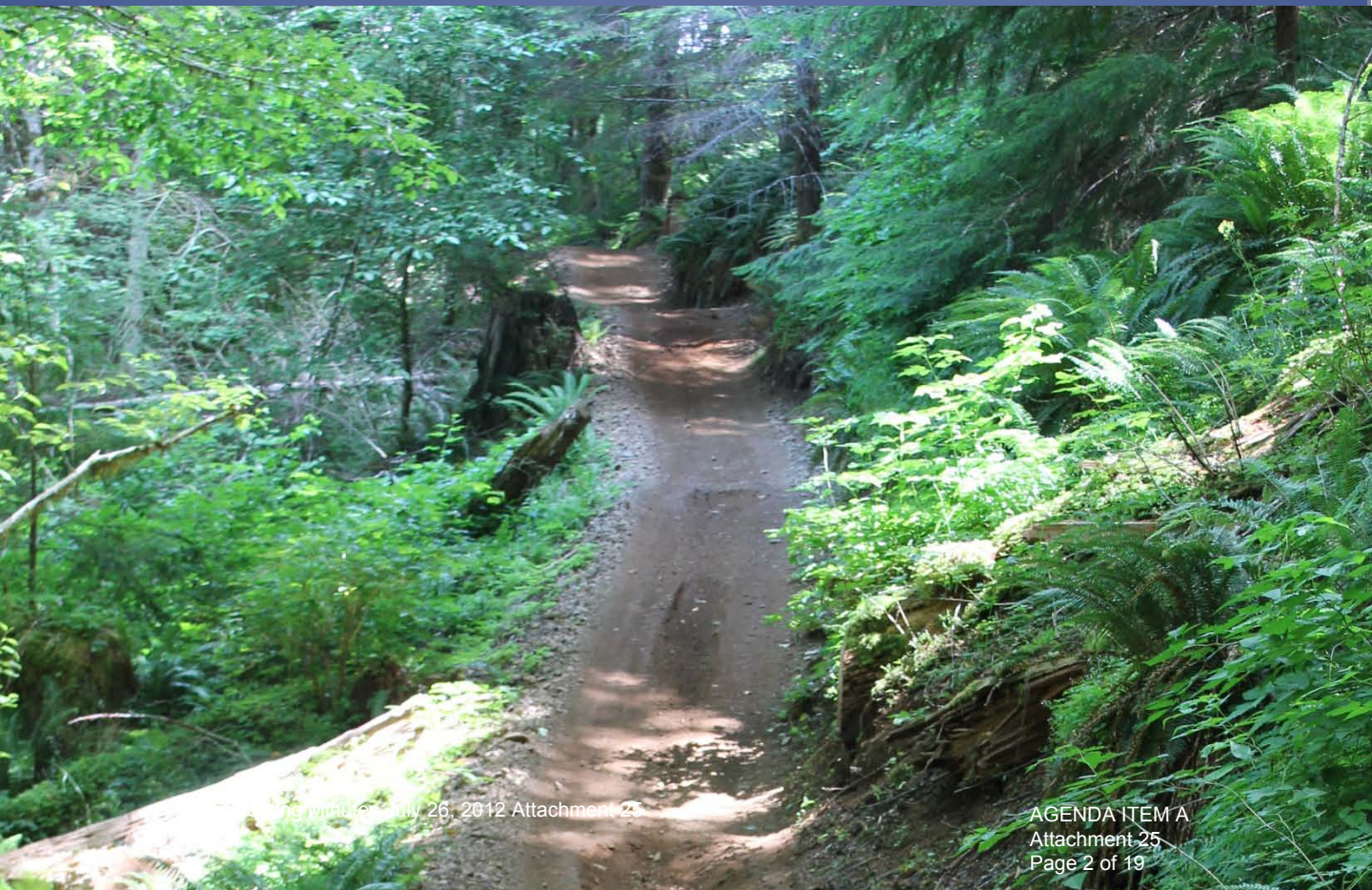


Performance Measures on State Forests

Tillamook, OR
July 26, 2012
Agenda Item 9

- Recommend changes to economic and social performance measures
- More work needed on environmental measures



Recommended Revised Measures:

Economic Measures:

- Performance Measure 1.
Financial sustainability of the State Forests Division (new).
- Performance Measure 2.
Net return on asset value.
– no change.

Environmental Measures

- Performance Measure 3.
Forest Health – no change.
- Performance Measure 4.
Water Quality – no change.
- Performance Measure 5.
Quantity of habitat – no change.

Social Measures

- Performance Measure 6.
Direct and indirect contributions from forest management to social benefits
 - *Direct and indirect financial contributions from the State Forests Division to support communities*
 - *Direct and indirect State Forests Division financial contributions to local and state government*
 - *Add recreation impacts*



Social Measures

- Performance Measure 7.
Availability, quality and public use of recreational opportunities and educational programs – no change
- Performance Measure 8.
Support for state forest management – revised to incorporate indicators of public and stakeholder involvement support.

Other Changes

- Add context about community wellbeing
- Add information about community wellbeing (population trend, age structure, employment etc.)
- Drop old Performance Measure 8, Public and Stakeholder Involvement.

Recommendation

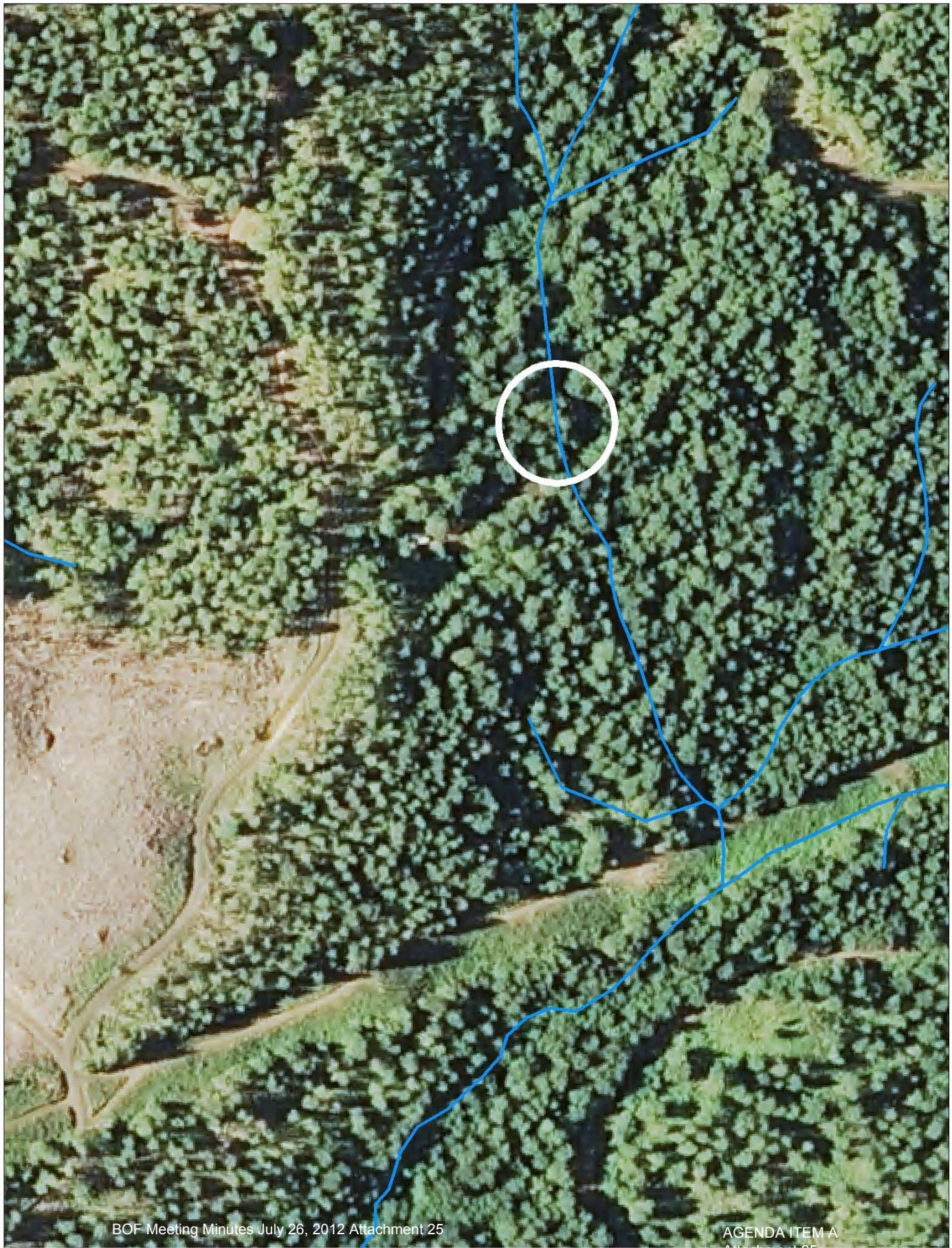
- Adopt the proposed performance measure revisions
- Incorporate these changes in the next performance measure report.
- Use these revisions as the basis for the analysis of alternative forest management strategies.
- Continue to look for opportunities for improvement

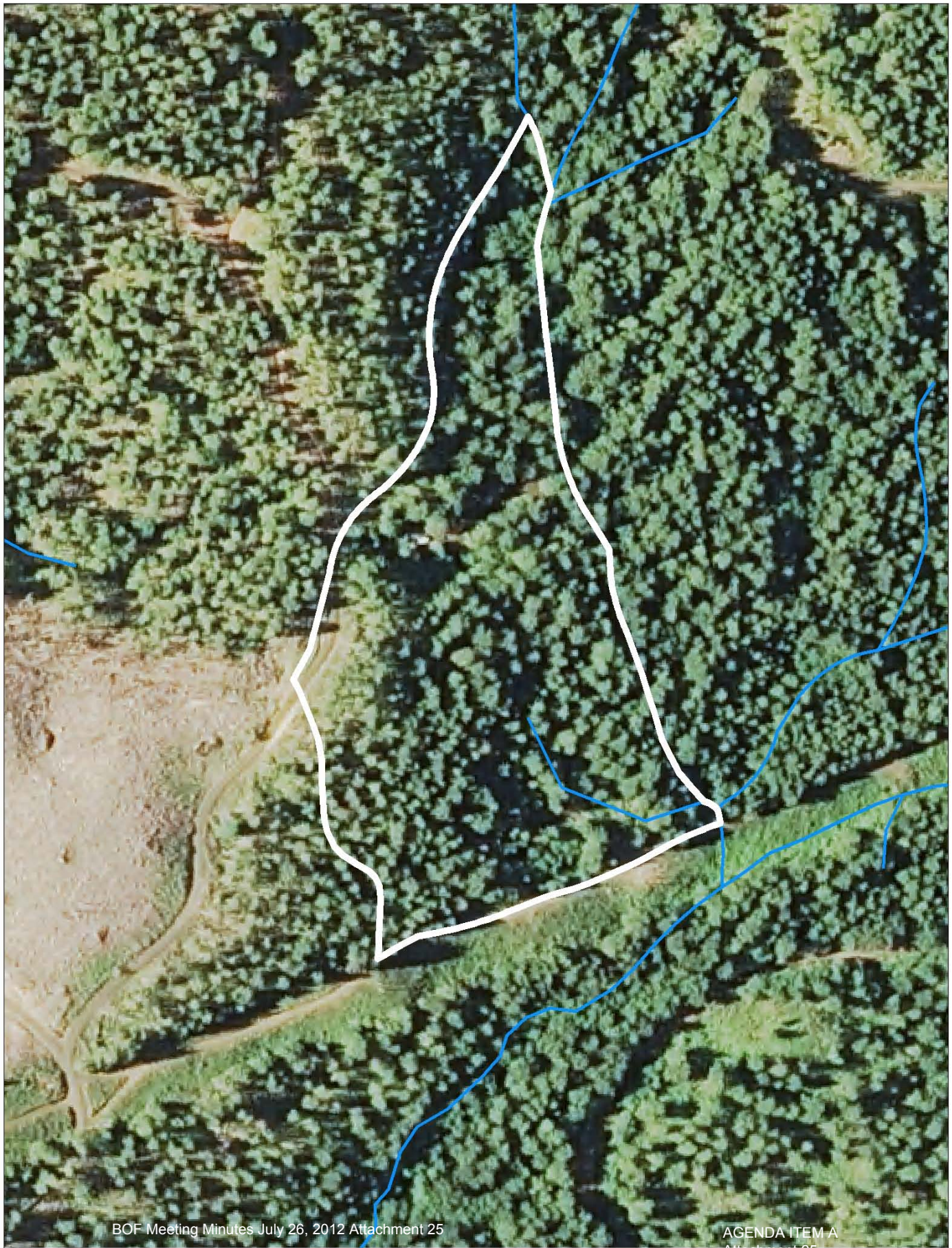
end

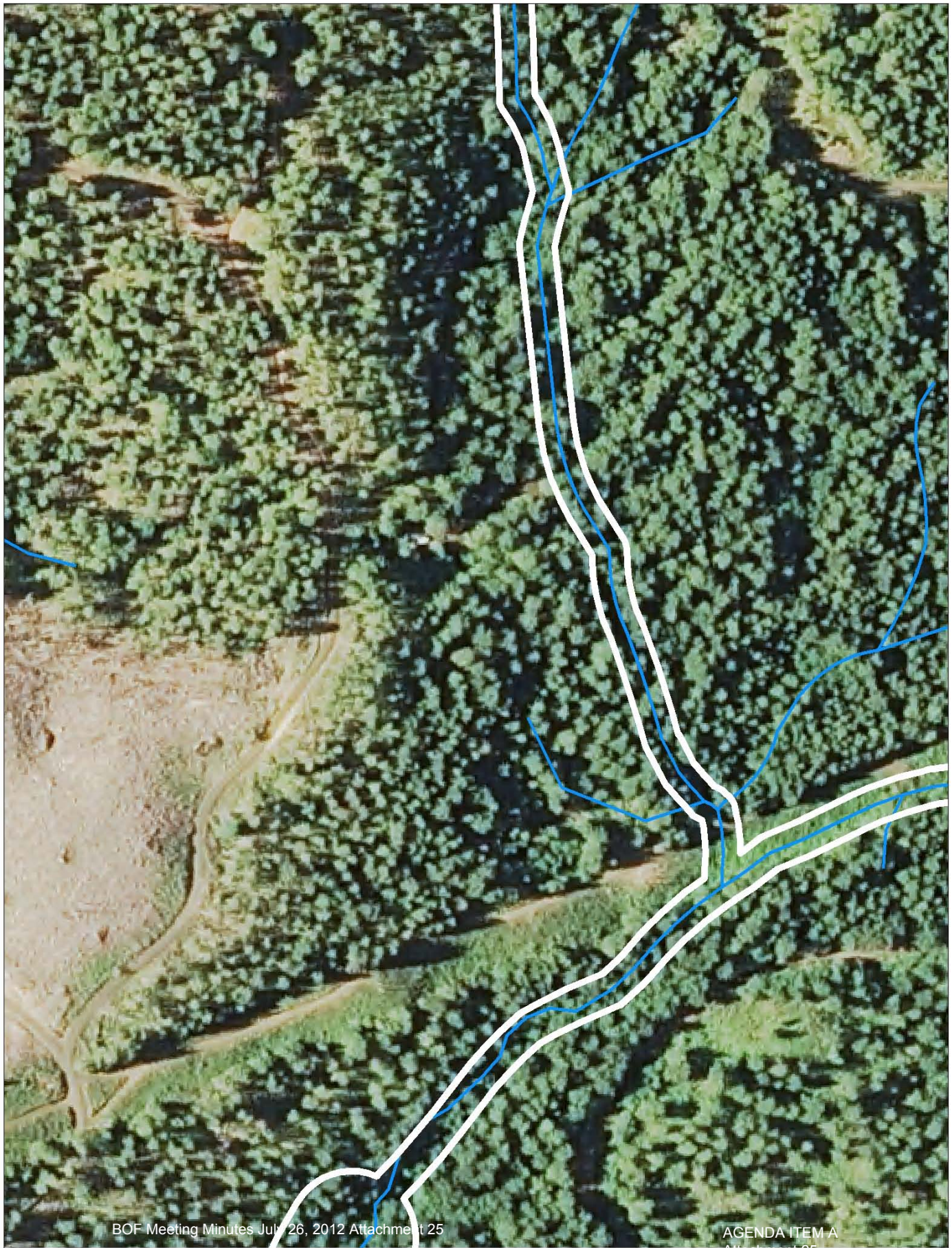
Basics of FMLCS











General Stewardship

- All forest resources are actively managed using integrated management strategies and sound conservation practices to meet forest management plan goals.

Special Stewardship

- One or more natural resources, social values, or administrative areas are present which require a level of protection that precludes the integrated management of all forest resources; lands are committed to a specific use and management activities are limited to those that are compatible with the specific use

